



MONTI AURUNCI NATURE PARK



INDEX



GREETING



THE INSTITUTION



THE HEADQUARTER



VISITOR CENTERS



HOSTELS



MOUNTAIN HUTS



DIDACTIC STRUCTURES



NATURAL MONUMENTS



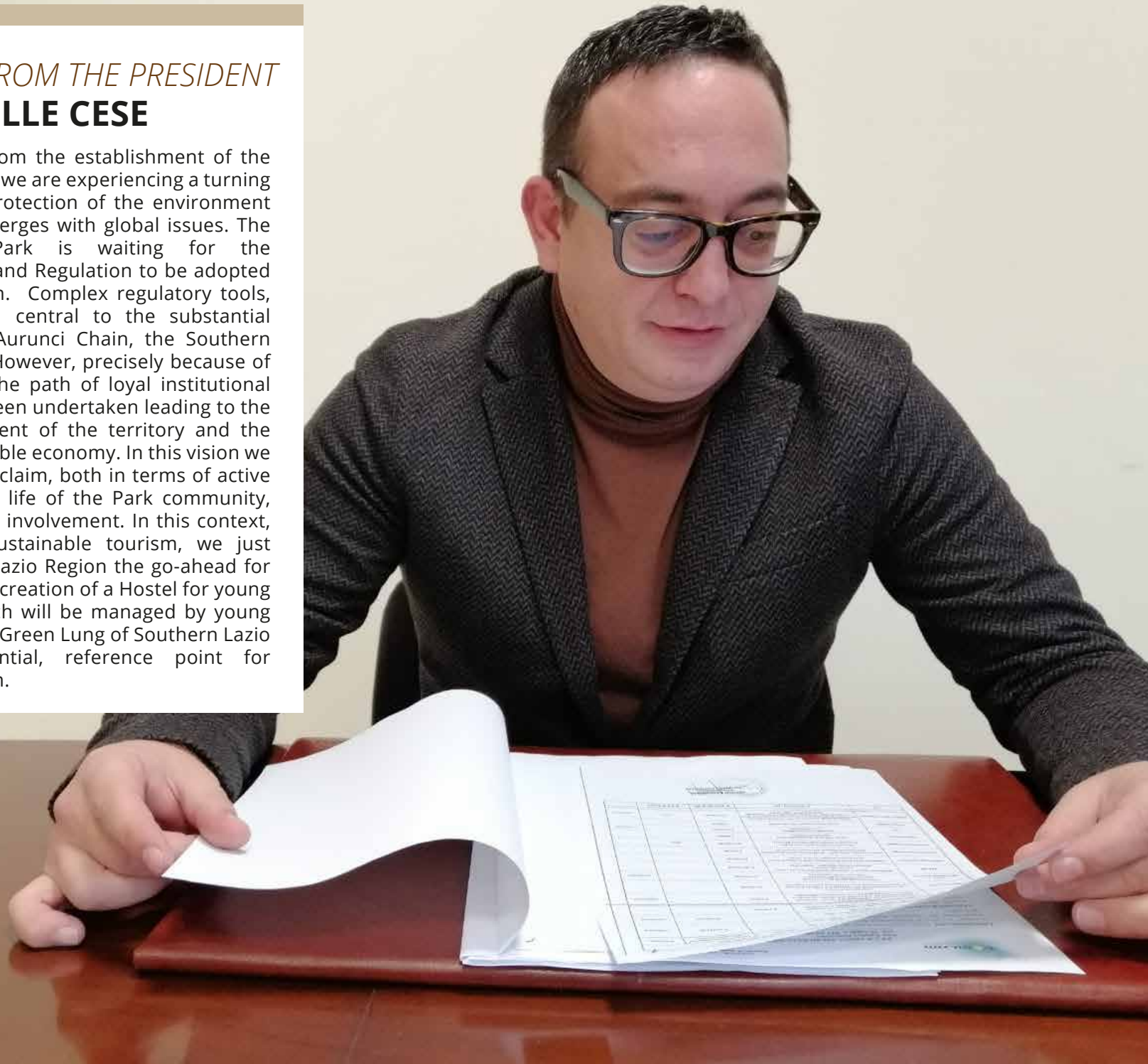
PICNIC AREAS



APPIAN WAY

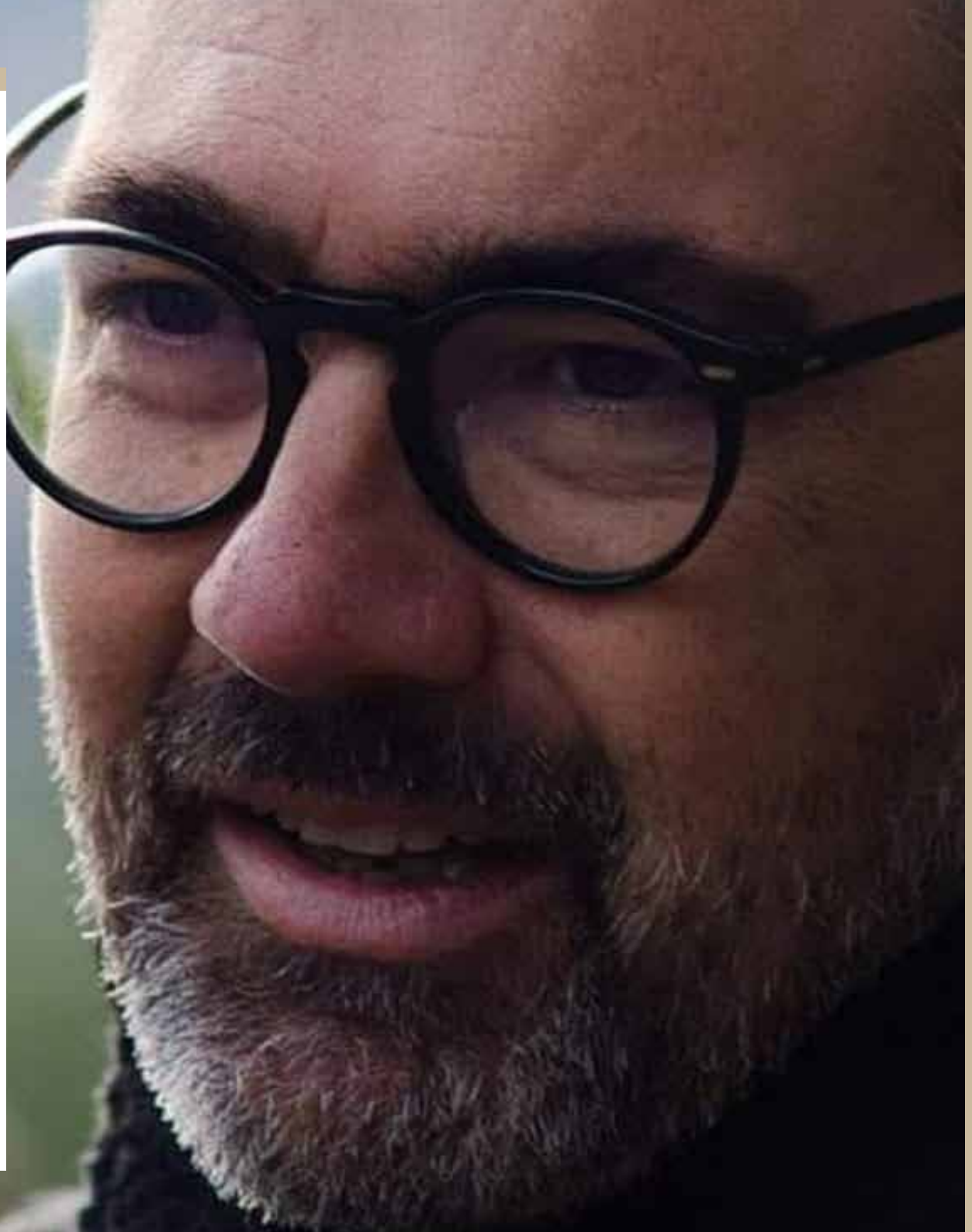
GREETINGS FROM THE PRESIDENT **MARCO DELLE CESE**

Twenty years on from the establishment of the Monti Aurunci Park, we are experiencing a turning point, where the protection of the environment and the territory merges with global issues. The Monti Aurunci Park is waiting for the Development Plan and Regulation to be adopted by the Lazio Region. Complex regulatory tools, but necessary and central to the substantial protection of the Aurunci Chain, the Southern Lazio Green Lung. However, precisely because of the Lazio Region, the path of loyal institutional collaboration has been undertaken leading to the constant development of the territory and the increase of sustainable economy. In this vision we received positive acclaim, both in terms of active participation in the life of the Park community, and in the planning involvement. In this context, in the wake of sustainable tourism, we just received from the Lazio Region the go-ahead for the financing of the creation of a Hostel for young tourists in Itri, which will be managed by young entrepreneurs. The Green Lung of Southern Lazio is now an essential, reference point for Sustainable Tourism.



GREETINGS FROM THE DIRECTOR **GIORGIO DE MARCHIS**

The institution of Parks in the last century represented a crucial moment for the protection of nature and the conservation of the territory. A long process that has allowed, over the course of a century, to remove vast portions of territory from the processes of urbanization and human settlement, safeguarding the naturalistic aspects. An innovative vision that made possible the birth of the system of Natural Protected Areas in Lazio, an integrated model matured between the 70s and the regional law of 1997. From that moment many things have changed. Today the Park Authorities have assumed a central role in the development of territorial policies to combine the effects of development with the protection of nature and sustainability. An important challenge that assumes an even deeper meaning before the threat of climate change. The Natural Park of the Aurunci Mountains, instituted in 1997, boasts a heterogeneous territory, included in an altitude range that goes from lowland areas about 30 meters above the sea level up to the 1535 meters of Mount Petrella which stands within easy reach from the coast. The chain of the Aurunci mountains is the southernmost part of the important mountain system of the Lazio preapennine, which also includes the Lepini mountains and the Ausoni mountains. Among the peculiarities of the Auruncis there is certainly that of being the only Lazio mountain range to directly face the Tyrrhenian Sea. From the highest peaks of the chain one can see the Pontine islands, the Circeo promontory, the Liri valley, the Matese mountains and the Abruzzo Apennine mountains. The varied landscape of the park is the ideal environment for many species of flora and fauna of great naturalistic interest. Our goal and our mission is to foster the development and compatible activities in the territory with nature conservation. A natural heritage to be preserved for everyone, without exception.



THE INSTITUTION

NATURE PARK OF AURUNCI MOUNTAINS

Established with Regional Law No. 29 of 06.10.1997, the Nature Park of Aurunci Mountains is the southernmost protected natural area of Lazio Region. Located a few kilometers from the sea, it is close to the park of the Ulisse Riviera and, further south, to the regional park of Roccamonfina in Campania. A natural area of almost twenty thousand hectares that takes its name from the mountain range that crosses it, the Aurunci Mountains. In the Park territory, located on the border between the provinces of Frosinone and Latina, big cities such as Formia and Fondi merge with small villages in the hinterland, rich in history and traditions: Ausonia, Esperia, Pico, Pontecorvo, Campodimele, Itri, Lenola, Spigno Saturnia. A vast area characterized by a very heterogeneous territory: in fact we go from flat valleys 20 meters above the sea level, up to peaks on the coast, such as Monte Petrella, with an altitude of 1535 meters. The Aurunci indeed boast the particularity of being the only mountain range in Lazio Region to overlook the Tyrrhenian Sea, with peaks of over 1,500 meters. Moreover, outside the territory of its competence, the institution has been entrusted with the management of 2 natural monuments: "Mola della Corte-Settecannelle-Capodacqua" in the Municipality of Fondi and "Montecassino" in the Municipality of Cassino, with an extension of 694 hectares.



Across the territory there is a network of paths for over 300 km that connects the various areas formerly inhabited by communities of local shepherds for the agro-forestry-pastoral activities, typical of the mountain environment. There are numerous historical testimonies dating back to the most remote times, from the ancient queen viarum, "via Appia" built by the Romans, to the Benedictine churches of the medieval age, to the remains of ancient residential areas with typical architectures such as herds or cisterns for the collection of rainwater, and snow wells. A landscape, that of the Aurunci Park, where nature blends with history and traditions. A heterogeneous, wild territory, made of caves, dolines, rocky ridges, until you reach the highest peaks, from which to admire the sea. The Aurunci Park has a very suggestive landscape, which has become part of the collective imagination through one of the masterpieces of neorealism, "La ciociara" by Vittorio De Sica. The park territory has also inspired works by the filmmaker Giuseppe De Santis and writers like Tommaso Landolfi, to whom has been dedicate also a fascinating literary park. Plain and uncontaminated hills where the passage of man is visible, including terraces for the cultivation of olive groves, monasteries and small shelters, bearing witness to a millennial human presence on these places. Cultural, historical, architectural beauties and a unique eno-gastronomic heritage: from honey to olive oil, from the pepper to high quality meat, from marzolina cheese to Cecubo Wine.





OUR HEADQUARTER CAMPODIMELE

The Park headquarter is located in the municipality of Campodimele, a marvelous village recognized as "Jewel of Italy" by the Ministry of Tourism. The village is the departure point for many mapped and equipped routes and paths that allow the visitor to discover the Park through a pleasant and relaxing walk. A real paradise for hikers. Campodimele, with just a thousand inhabitants, has the particularity of being one of the most long-lived municipalities in Italy. Indeed, here a group of scientists from the University La Sapienza in Rome has identified one of the genes that would be the basis of the most salient feature of its citizens: long life and few diseases



VISITOR CENTERS

KARST MUSEUM ESPERIA

The Karst Museum is located in the historic center of Esperia, inside the monumental complex "Palazzo Spinelli", an ancient historic palace dating back to 400. The Museum was designed by the Speleological Group of Rome, allowing the visitor to enter a trip in the underground, through karst caves and different evidences showing the flora and fauna of the Park. Inside the Museum old paleontological artifacts can be found, together with a giant cast of the dinosaur footprints discovered 4 km far from the historic center. The Karst Museum is a necessary step for anyone who wants to get the know the Monti Aurunci Park, a path capable of fascinating both young and old people.

ADDRESS

Via Castello, snc - Esperia (FR)

ENTRANCE

Free

OPENING

MON-WED-FRI: 8 am / 2 pm

TUE-THU: 8 am / 2 pm - 3 pm / 5 pm

Historical palace devoid of structures accessible to disabled people

To book a guide tour please contact the ParK offices

PHONE +39 0771.598114/130

E-MAIL info@parcoaurunci.it

VISITOR CENTERS

NATURALISTIC MUSEUM SPIGNO SATURNIA

The Naturalistic Museum is a structure of great environmental interest. A multimedia and interactive museum that contains the many aspects that distinguish the Protected Area of the Aurunci Park. Inside it, video projections illustrate different themes, while modern interactivity systems lead the visitor to discover the territory and the biodiversity of the Monti Aurunci Natural Park. From the karst formation of the mountains to the wild animals that hide in them, from the traditions of the local people to the numerous species of trees and plants, the museum presents itself as a true incubator of information for anyone who wants to know and deepen the geological history, the naturalistic universe and the ecosystem of Aurunci Mountains.



ADDRESS

Via Roma, snc - Spigno Saturnia (LT)

ENTRANCE

Free

OPENING

MON-WED-FRI: 8 pm / 2 pm

TUE-THU: 8 pm / 5:30 pma

Guided tour on request

PHONE +39 0771.598114

E-MAIL info@parcoaurunci.it



VISITOR CENTERS

PARK CARPENTRY ITRI

The Carpentry was created with the aim of using wood coming from the maintenance work in the woods of the Aurunci Park. Different types of wood obtained from the naturalistic management of the woods are wisely transformed into trays, planters, pot holders, etc. For external applications, both public and private, the Carpentry create benches and tables for green spaces and picnic areas, together with signs, billboards and furnishing elements to be used for events and shows.

ADDRESS

Contrada Rigoli (trav. Via Civita Farnese - ex Istituto Agrario) - Itri (LT)

ENTRANCE

Free

OPENING

MON-WED-FRI: 8 pm / 2 pm

TUE-THU: 8 pm / 5:30 pma

Guided tour on request

PHONE +39 0771.727241

E-MAIL vivaio@parcoaurunci.it



VISITOR CENTERS

THE PARK LAB ITRI

The lab inside the carpentry arose from the need to recover one of the oldest craft of the area that was in danger of being lost, but also from the need to promote the art of "stramma" weaving. The ampelodesma commonly called "Stramma" or "strame" is an herbaceous plant typical of the Mediterranean scrub, characterized by a filamentous shape. Interlaced alone or combined with wicker rushes or tender scions of olive trees, the weaving of stramma gives life to bags, hats, baskets, chairs but also to original ornamental compositions such as table centers.

ADDRESS

Contrada Rigoli (trav. Via Civita Farnese - ex Istituto Agrario) - Itri (LT)

ENTRANCE

Free

OPENING

MON-WED-FRI: 8 pm / 2 pm

TUE-THU: 8 pm / 5:30 p.m.

Guided tour on request

PHONE +39 0771.727241

E-MAIL vivaio@parcoaurunci.it



VISITOR CENTERS

GARDEN CENTRE ITRI

The garden center was born to protect the vegetation heritage of the Aurunci Park with particular regard to the most interesting species between the 1900s that make up its flora. Located in a former agricultural school recovered and adapted to new needs, it is the destination of numerous school groups as well as of young university students and interns who are interested in the numerous activities that take place there. The structure, equipped with a photovoltaic system, guarantees its energy self-sufficiency as well as contributes to the reduction of CO2 emitted into the atmosphere. The center supplies local companies and other public or private bodies with professionalism and competence, advising and contributing to the identification of the most suitable species for the place of planting. The Natural Park of the Aurunci Mountains, still preserves intact natural environments and hosts a rich, varied entomological fauna, with many rare and localized butterfly species. To protect this precious heritage, the Park participated in the Lepidoptera protection campaign, creating a butterfly garden of remarkable aesthetic and educational value, inside the Garden Centre. The garden, due to its high educational value, is the final stage of the Park offer designed for schools and scholars.

ADDRESS

Contrada Rigoli (trav. Via Civita Farnese - ex Istituto Agrario) - Itri (LT)

ENTRANCE

Free

OPENING

MON-WED-FRI: 8 pm / 2 pm

TUE-THU: 8 pm / 5:30 pma

Guided tour on request

PHONE +39 0771.727241

E-MAIL vivaio@parcoaurunci.it





VISITOR CENTERS

CORK MUSEUM ITRI

The Cork Museum, located inside the Garden Center and Carpentry of the Park in Itri, was born thanks to regional funds of the POR FESR Lazio 2007 - 2013. Here are exposed some of the tools of the former "Sugherificio Ialongo" of Itri. Graphic panels illustrate the whole process of cork collecting and processing: from the raw material obtained from the oak, to the finished product, as well as describes the importance that this material has represented in history, for the Aurunci territory. In the exhibition hall, in addition to an educational path on cork, the history of the cork factory is gone through that of the Ialongo family, who built a large house in via civita farnese in Itri and the cork factory. In the past the cork woods represented an important resource for the local economy of the Aurunci area. We are talking about a real factory that gave work to numerous workers, including many women. His activity did not stop including during the Second World War, enough to continue until 1974, the year in which his production ceases due to the low demand for cork products, supplanted, for some time, by plastic.

ADDRESS

Contrada Rigoli (trav. Via Civita Farnese - ex Istituto Agrario) - Itri (LT)

ENTRANCE

Free

OPENING

MON-WED-FRI: 8 pm / 2 pm

TUE-THU: 8 pm / 5:30 pma

Guided tour on request

PHONE +39 0771.727241

E-MAIL vivaio@parcoaurunci.it



ADDRESS

Via Castello, 9 - Esperia (FR)

BEDS

16

SERVICES

Self management with use of kitchen, dining room

PHONE +39 0771.598114

E-MAIL info@parcoaurunci.it

*HOSTELS***PALAZZO SPINELLI
ESPERIA**

The Palazzo Spinelli Hostel is located in the historic center of Esperia Superiore, in a historical palace dating back to the second half of the 1400s. Over the centuries it has served as a prison, magistrate's court, tobacco factory and in the second post-war period it hosted several homeless families. After decades of abandonment, it returned to its former glory through a series of recovery measures concerted between the municipality of Esperia, its owner and the managing authority. Today it houses inside, in addition to the hostel, also the Museum of Karst of the Ente Parco dei Monti Aurunci.



A close-up photograph of a dark, textured hat hanging from a tree branch. The hat is made of a coarse, woven material and has a wide brim. It is hanging from a thick, rough-barked tree branch. The background is a blurred forest scene with green foliage and a blue sky.

Info & booking:

PHONE +39 0771.598114

E-MAIL info@parcoaurunci.it

MOUNTAIN HUTS **MOUNTAIN HUTS**

Hospitality is one of the key aspects of the Aurunci territory. Here visitors can find shelters and equipped areas in compliance with low environmental impact. All centers are regulated to be used by citizens and associations.

A photograph of a yellow mountain hut with a stone base, situated in a wooded area. The hut has a brown door and a window. A picnic table and benches are in the foreground. A map is mounted on the wall. The text overlay provides details about the hut.

MOUNTAIN HUTS **MOUNTAIN HUT RANUCCI PICO**

The facility features a kitchen and a fireplace.
Outside is provided with a picnic area

Opening soon

ADDRESS
Pozzo Ranucci

BEDS
7

PHONE +39 0771.598114

E-MAIL info@parcoaurunci.it

GPS POSITION
340144 - 4587248

ADDRESS

Località Monte Appiolo in Lenola

BEDS

8

PHONE +39 0771.598114

E-MAIL info@parcoaurunci.it

GPS POSITION

334621 - 4585792

MOUNTAIN HUTS

**MOUNTAIN HUT GREGORIO NOTARIANNI
LENOLA**

The facility is provided with renewable energy sources, a covered area furnished with tables, benches and barbecue for picnics.



ADDRESS

Monte Faggeto

BEDS

19

SERVICES

heating fireplace, fireplace,
kitchen, picnic area

PHONE +39 0771.598114

E-MAIL info@parcoaurunci.it

GPS POSITION

340789 - 4581116

MOUNTAIN HUTS

MOUNTAIN HUT FAGGETO CAMPODIMELE

Heartbeat of all the paths that cross the Park territory, it can be reached from different starting points: Itri, Esperia, Pontecorvo, Pico and Campodimele. A path for hikers and mountain lovers eager to immerse themselves in the nature of this enchanting area, with its unique colors and emotions.



ADDRESS

Monte Calvo di Tozze

BEDS

10+8

SERVICES

heating fireplace, kitchen

PHONE +39 0771.598114

E-MAIL info@parcoaurunci.it

GPS POSITION

340459 - 4575579

MOUNTAIN HUTS

MOUNTAIN HUT TOZZE ITRI

The facility is located in the homonymous resort and can accommodate up to 10 beds. The structure is equipped with bunk beds, 1Kw photovoltaic system, heating fireplace and solar heating. The kitchen is provide with a gas hob and a fridge.





DIDACTIC STRUCTURES

STUDY CENTER ON AURUNCI CULTURE DE SANTIS FORMIA

Located in the historic center of Maranola, in the city of Formia, the A. De Santis Study Center houses a library, a historical archive and boasts on the outside a multifunctional space for cultural and promotional events.

ADDRESS

Via San Luca, Maranola (Formia)

OPENING

MON - WED - FRI: 8 am / 2 pm

TUE - THU 8 am / 5,30 pm

PHONE +39 0771.598114

E-MAIL info@parcoaurunci.it





DIDACTIC STRUCTURES

DIDACTIC GARDEN

ESPERIA

Multi-purpose facility located in the district of Monticelli in the municipality of Esperia, the didactic garden was created as a center for the enhancement of ancient orchards. From its opening it has hosted garden therapy projects as well as hippotherapy activities. The facility is available for thematic projects proposed by associations and individuals to be designed with the Park authority.

ADDRESS

Via Sant'Anna, (Monticelli d'Esperia)

OPENING

guided tour on request

PHONE +39 0771.598114

E-MAIL info@parcoaurunci.it





NATURAL MONUMENTS

MOLA DELLA CORTE SETTECANNELLE FONDI

The Natural Monument Mola della Corte - Settecannelle - Capodacqua established with DPGR n° 344 of 06/21/2011 lies entirely in the municipality of Fondi, with an extension of about 4 hectares. It is characterized by the presence of a hygrophilous forest with aquatic and submerged vegetation. The site, although its profound transformations, represents a residual strip of the vegetation of the humid environments in which rarefied species can find refuge. Like an oasis in the middle of the desert, a mirror of spring water on the outskirts of urbanized environment represents a precious refuge for numerous animal species, resident or migratory. The abundant presence of water throughout the year creates a unique habitat hosting different animals: porcupines, hedgehogs, beech martens and foxes; on the branches of the trees the gray heron and the kestrel safely sleep, and occasionally the great white heron and the marsh harrier appear. Between the vegetation of the banks the Little Moorhen nidifies and with a bit of luck it is possible to see the Kingfisher in one of his fast movements. The presence of Nutria has been noted for some years. The ichthyic component of this ecosystem is interesting, among the typical species of fresh and running waters is the Ruella. The surface of the water attracts numerous insects, including dragonflies engaged in acrobatic courtship dances and pursuits.





MONUMENTI NATURALI

MONTECASSINO CASSINO

The Natural Monument of Montecassino was established with DPGR n ° T0154 of 11/03/2010. The protected natural area extends over approximately 694 hectares entirely in the Municipality of Cassino. The area includes the ancient Abbey of Montecassino, the Rocca Janula, the theater and the Roman amphitheater, the Polish military cemetery, the monument called "the tank", the Stele dedicated to the fallen Poles placed at "quota 593", and part of the military "Cavendish Road" built during the Second World War. The last war events have strongly marked the area of Montecassino, so much that along the roads and paths, one has the impression of reliving history. The Monte Cairo carbonate mass included in the area of Montecassino is rich in caves and karst dolines typical of the Apennine chain. The meteoric waters responsible for this phenomenon feed the sources of the Gari river, visible in the municipal villa of Cassino. The wooded area is also important, mostly consisting of mixed wood of downy oaks, black hornbeams, opal and field maples, rowan etc. depending on the slopes. As evidence that the place was intensely frequented and inhabited one can find numerous herds and country houses of particular importance, perfectly integrated into the landscape. Many of them are now disused and dilapidated, sometimes completely invaded by vegetation if not used as temporary shelters for animals.

A photograph of a forest picnic area. In the foreground, a wooden picnic table is partially visible. In the middle ground, another wooden picnic table and bench are set up. The ground is covered with pine needles and dirt. The background is filled with tall, thin pine trees. A pink banner is at the top, and a white text box is on the right side.

PICNIC AREAS

Picnic areas are specifically equipped with barbecues and tables allowing anybody to spend a day outdoors completely for free.



AREE PICNIC

- LE SORGENTI
- LE CROCETTE
- CAMPONE
- BIVIANO
- LA VALLETTA
- ACQUAVIVA
- PINETA DI CAMPELLO
- SANT'ARCANGELO
- PINETA DI SELVACAVA
- VALLETONDA
- MONTE CIVITA
- S.MARIA DELLA NOCE
- POLLECA
- FOSSA ROTONDA
- APPIA ANTICA
- SORGENTE FAGGETINA
- MULINO DEL MALO TEMPO
- VILLA PLACITELLI
- PORTELLA
- LA VALLE



THE APPIAN WAY

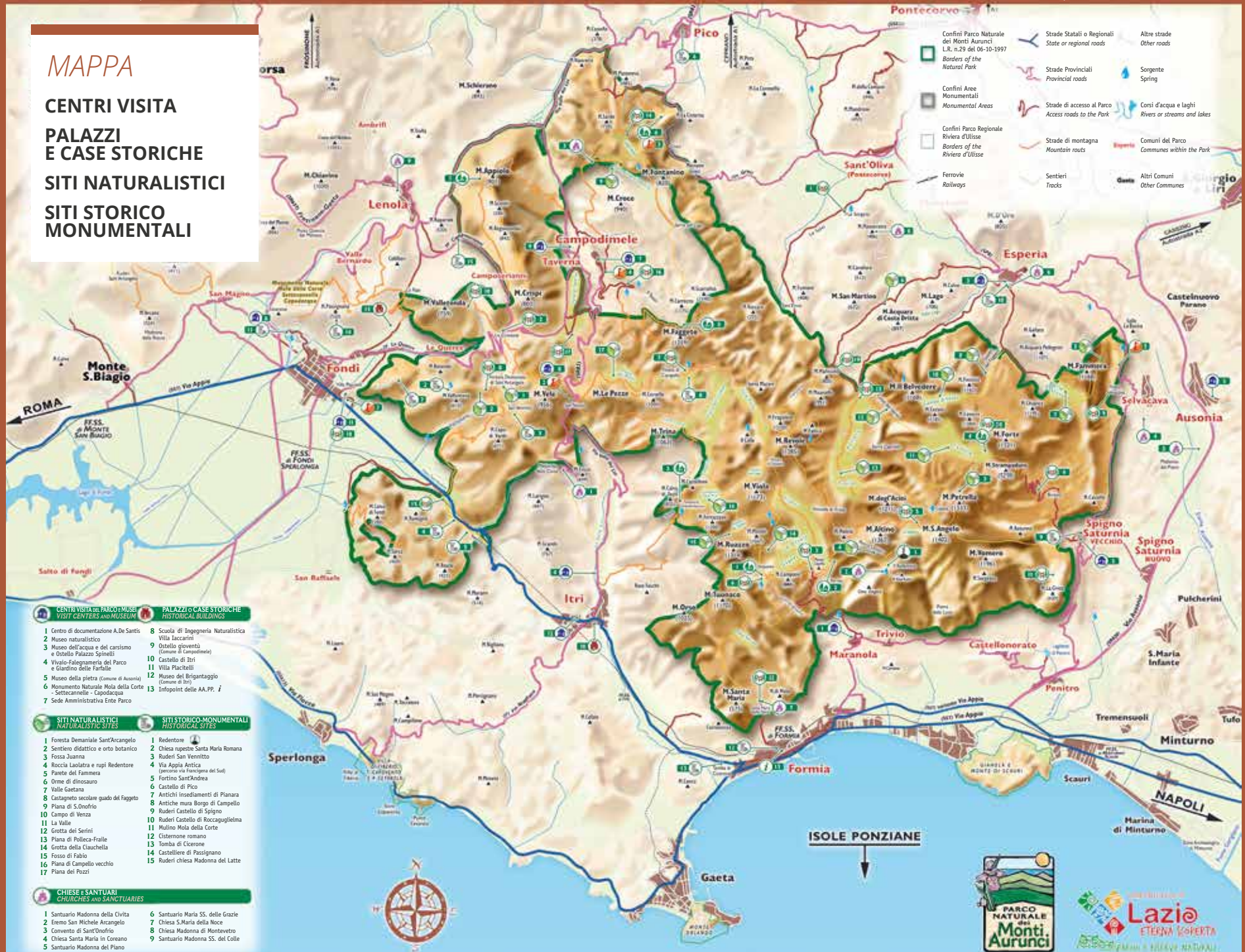
If the stones of the Appia Way could talk... they would tell, starting from 321 BC, of the track carefully chosen, of the hard work needed to cut the rocks, to build terraces and bridges in the most inaccessible valleys, to arrange the pavement, to construct temples and huge tanks. The ancient queen viarum extends for more than three km inside the Aurunci Park. This is a particularly suggestive trait, where the stones "speak" with the help of information panels set up along the entire route. An extraordinary road that has no equal in the world and that here, in the Park, along a narrow valley surrounded by limestone rocks and Mediterranean scrub, manages to impress and to add new elements of knowledge to the history of human evolution.

MAPPA

CENTRI VISITA

PALAZZI
E CASE STORICHE

SITI NATURALISTICI

SITI STORICO
MONUMENTALI

RIFUGI
REFUGES

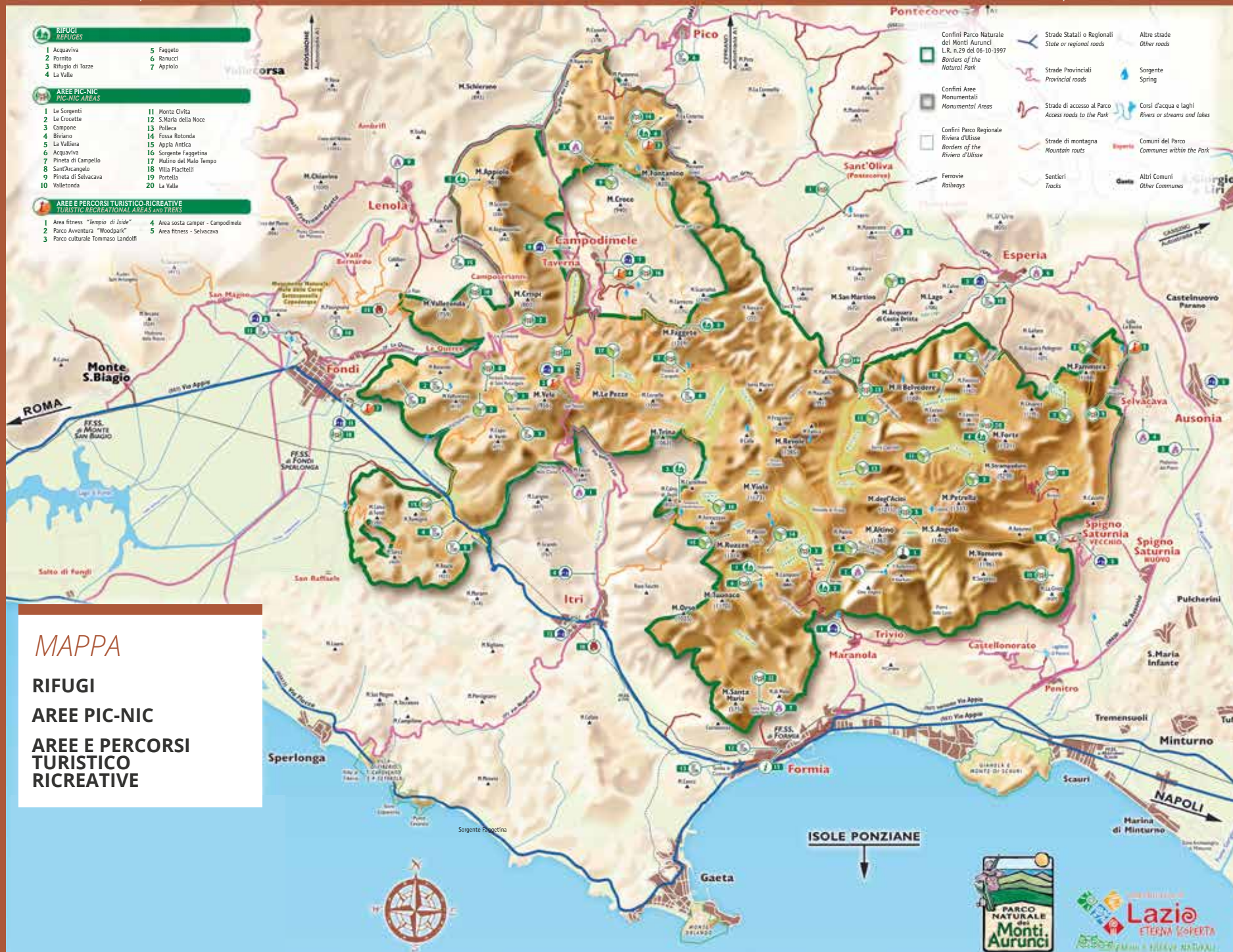
- 1 Acquariva
- 2 Pomitio
- 3 Rifugio di Tozze
- 4 La Valle
- 5 Faggeto
- 6 Ramucci
- 7 Appiolo

AREE PIC-NIC
PIC-NIC AREAS

- 1 Le Sorgenti
- 2 Le Crocette
- 3 Campone
- 4 Biviano
- 5 La Valliera
- 6 Acquariva
- 7 Pineta di Campello
- 8 Sant'Arcangelo
- 9 Pineta di Selvacava
- 10 Valletonda
- 11 Monte Civita
- 12 S. Maria della Nave
- 13 Pollica
- 14 Fossa Rotonda
- 15 Appia Antica
- 16 Sorgente Faggetina
- 17 Mulino del Malo Tempo
- 18 Villa Placitelli
- 19 Portella
- 20 La Valle

AREE E PERCORSI TURISTICO-RICREATIVE
TURISTIC RECREATIONAL AREAS AND TRAILS

- 1 Area fitness "Tempio di Iside"
- 2 Parco Avventura "Woodpark"
- 3 Parco culturale Tommaso Landolfi
- 4 Area sosta camper - Campodimele
- 5 Area fitness - Selvacava



MAPPA

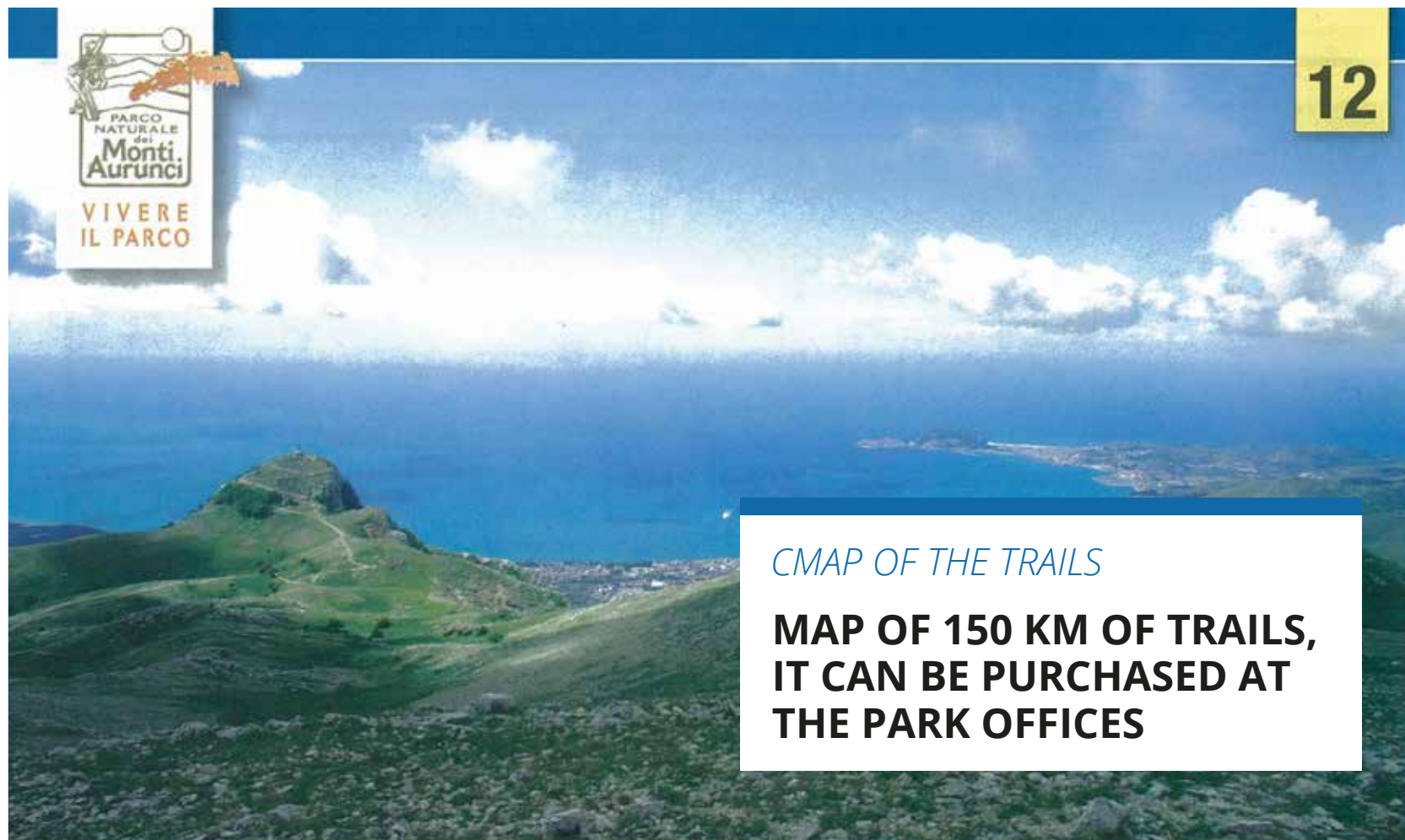
RIFUGI

AREE PIC-NIC

AREE E PERCORSI
TURISTICO
RICREATIVE



12



CMAF OF THE TRAILS

**MAP OF 150 KM OF TRAILS,
IT CAN BE PURCHASED AT
THE PARK OFFICES**

CARTA DEI SENTIERI

NEL PARCO NATURALE DEI MONTI AURUNCI



EDIZIONI IL LUPO

SCALA 1:25000





Viale Glorioso, snc
Campodimele (LT)

Phone

0771.598114/30

Fax

0771.598166

Email

info@parcoaurunci.it